

Drawing and boring

DESPITE AN EARLY loss, Soviet world champion Anatoly Karpov still took first place at the Tilburg super-tournament in Holland. Indeed he bounced back from his disaster against Larsen (see last week) by adopting for himself the very defence against which he had lost — the Petroff — to defeat one of his nearest rivals, Jan Timman, in the next round.

Apart from Karpov's recovery, however, Tilburg was rather tame with only 31 per cent of decisive games. When "super-tournaments" first caught on in 1978 it was fascinating to follow the supermen of world chess pitted against one another. But lately the fighting spirit seems to have diminished, and whereas last year's Montreal and Tilburg had over 40 per cent of wins, this year's Bugojno sank to an all-time low with all but 26 per cent of games ending in draws.

Organisers should include an aggressive and rapidly improving player, instead of insisting that every Grandmaster invited must have a rating of 2600 or more. England's Tony Miles has won nine consecutive tournaments this year, but was not invited to Tilburg because his Elo rating (they are calculated only once a year) has not caught up yet.

Part of the blame for dull tournaments must, paradoxically, fall on Karpov himself. He and the Soviet federation boycott tournaments in which his major rival, Soviet defector Viktor Korchnoi, participates.

Not all games from Tilburg were boring, of course, as the following fine win shows.

RUY LOPEZ

R. HUBNER	L. KAVALEK
1. e4	e5
2. Nf3	Nc6
3. Bb5	a6
4. Ba4	d6
5. 0-0	Nf6
6. Re1	b5
7. Bb3	Na5
8. d4	Nxb3
9. axb3	exd4?
10. Nx d4	Bd7
11. e5	

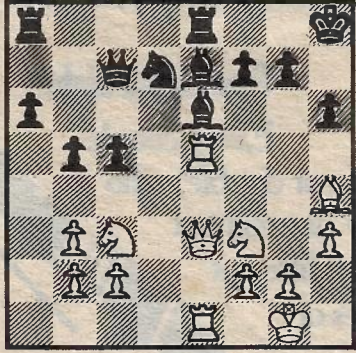
Initiating pressure down the e-file, which lingers on long after Black manages to get castled.

11. ...	dxe5
12. Rxe5 ch	Be7

13. Qe2	c5
14. Nf3	
14. ...	Be6
15. Bg5	0-0
16. Nc3	Qc7
17. h3	h6
18. Bh4	Rfe8
19. Re1	Kh8

Not 14. Rxc5 Bg4 15. Qe3 0-0. On 19...Rad8 White exploits his tripling on the e-file with 20.Bxf6 Bxf6 21.Nd5!

20. Qe3	Nd7
---------	-----



Now Hubner embarks on a winning sacrifice.

21. Rxe6!	fxe6
22. Bxe7	b4

On 22 ... Rxe7 then 23.Nd5! is the key move.

23. Nh4!	bxc3
24. bxc3	

The tempting 24.Ng6 ch Kh7 25.Qe4 fails to 25...cxb2! 26.Nf8 ch Kg8 27.Qh7 ch Kf7 28.Nxe6 Qe5!! 29.Rxe5 b1=Q ch and Black wins.

24. ...	Qc6?!
25. Rd1	c4
26. Rd6	Qb5
27. Qxe6	Nf8
28. Qf7	Rxe7

Giving back the sacrificed material is Kavalek's only way to prevent 29.Rxh6 ch gxh6 30.Bf6 mate.

29. Qxe7	Re8
30. Qc7	Re1 ch
31. Kh2	Qe5 ch
32. g3	Re2
33. Qb6	Kh7

Or 33...Rxf2 ch 34.Qxf2 Qxd6 35.Qxf8 ch Qxf8 36.Ng6 ch and wins the pawn endgame.

34. Rd8	Ne6(?)
35. Rh8 chl	Resigns

Black's queen is lost after 35...Kxh8 36.Ng6 ch.

MURRAY CHANDLER

TILBURG, 1980

	1	2	3	4	5	6	7	8	9	10	11	12	
1 KARPOV		1/2	1	1/2	1	1/2	1/2	0	1	1	1	1/2	7 1/2
2 PORTISCH	1/2		1/2	1/2	1/2	1	1/2	1	1/2	1/2	1/2	1	7
3 TIMMAN	0	1/2		1/2	1/2	1/2	1/2	1	1	1/2	1/2	1	6 1/2
4 SOSONKO	1/2	1/2	1/2		1/2	1/2	1/2	1/2	1	1/2	1/2		6
5 SPASSKY	0	1/2	1/2	1/2		0	1/2	1	1/2	1	1	1/2	6
6 TAL	1/2	0	1/2	1/2	1		1/2	1/2	1/2	1/2	1/2		5 1/2
7 HORT	1/2	1/2	1/2	1/2	1/2	1/2		0	1/2	1/2	1/2	1/2	5
8 LARSEN	1	0	0	1/2	0	1/2	1		1	0	1/2	1/2	5
9 HUBNER	0	1/2	0	1/2	1/2	1/2	1/2	0		1/2	1/2	1	4 1/2
10 RIBLI	0	1/2	1/2	0	0	1/2	1/2	1	1/2		1/2	1/2	4 1/2
11 ANDERSSON	0	1/2	1/2	1/2	0	1/2	1/2	1/2	1/2	1/2		1/2	4 1/2
12 KAVALEK	1/2	0	0	1/2	1/2	1/2	1/2	1/2	0	1/2	1/2		4